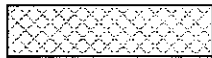
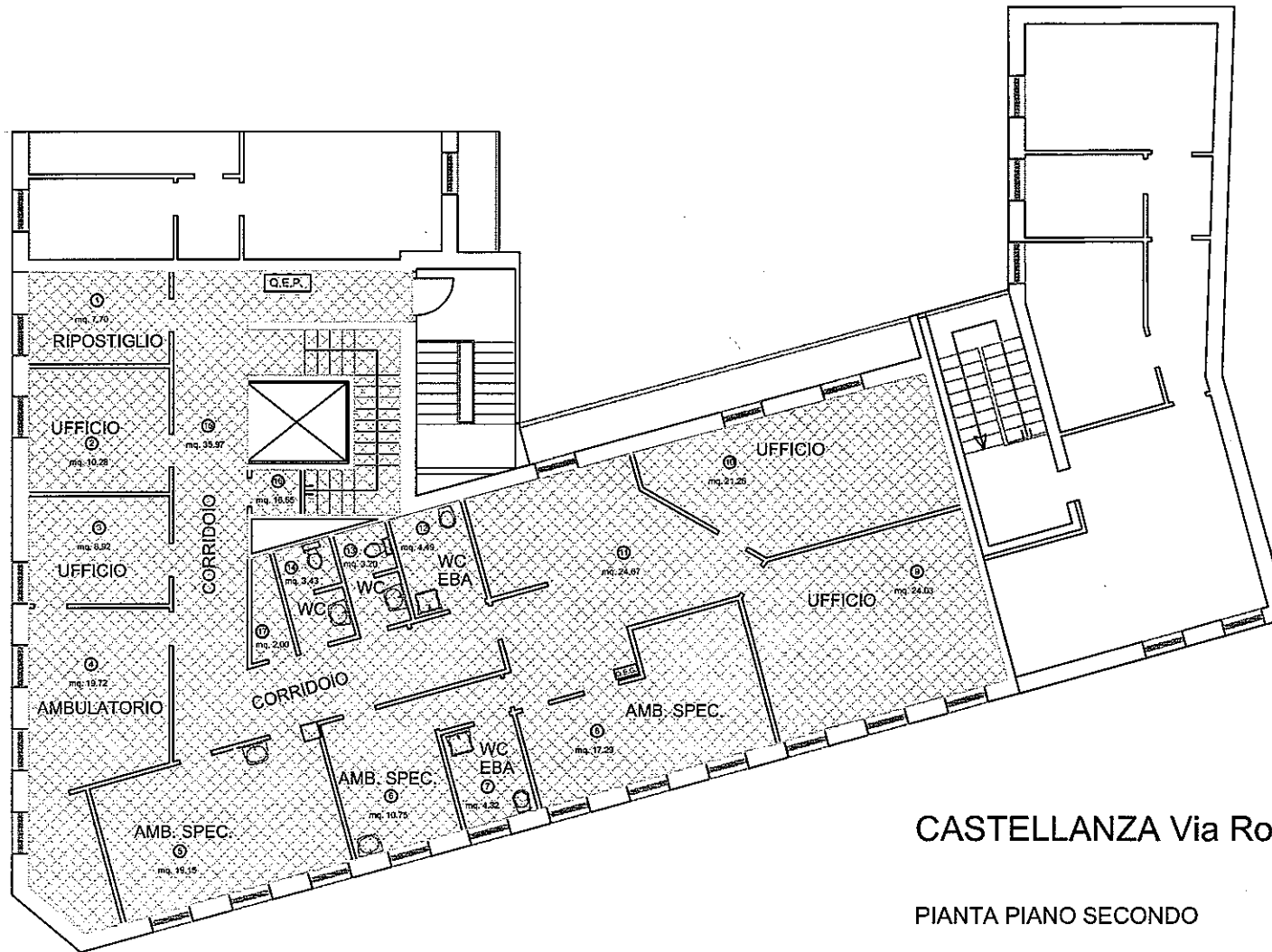


Allegato A (coloreato) (delibera G.C. n. 195 del 29/12/2018)



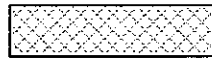
UTILIZZO ATS = mq. 235,59



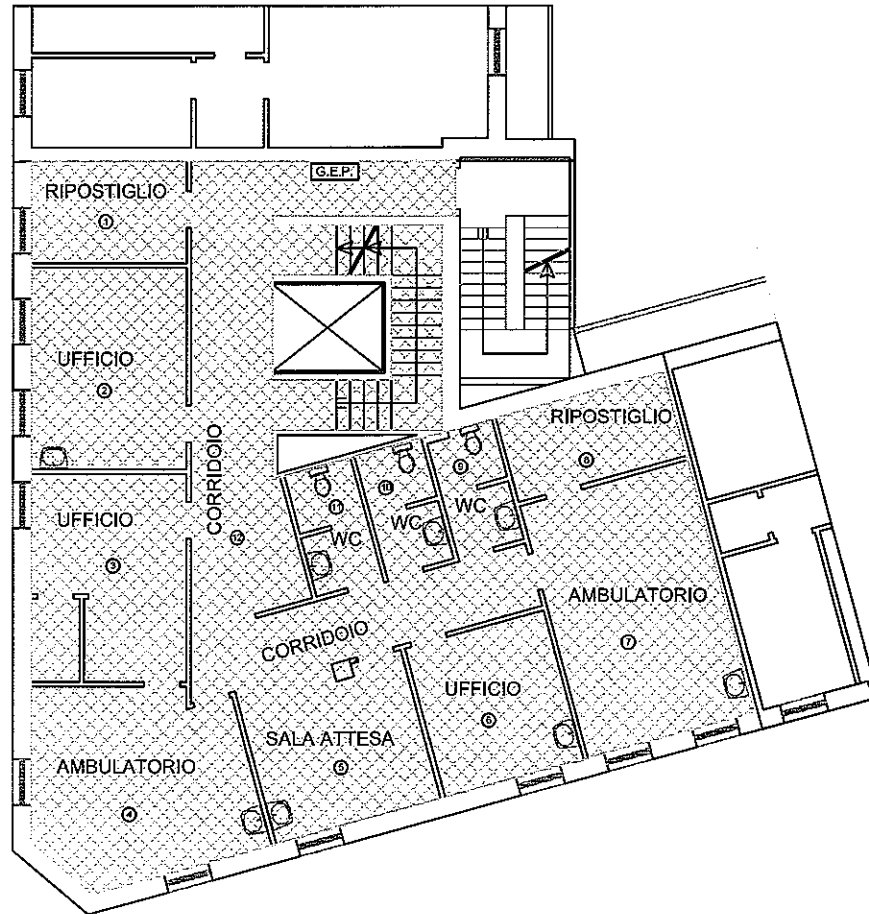
CASTELLANZA Via Roma

PIANTA PIANO SECONDO

Allegato A

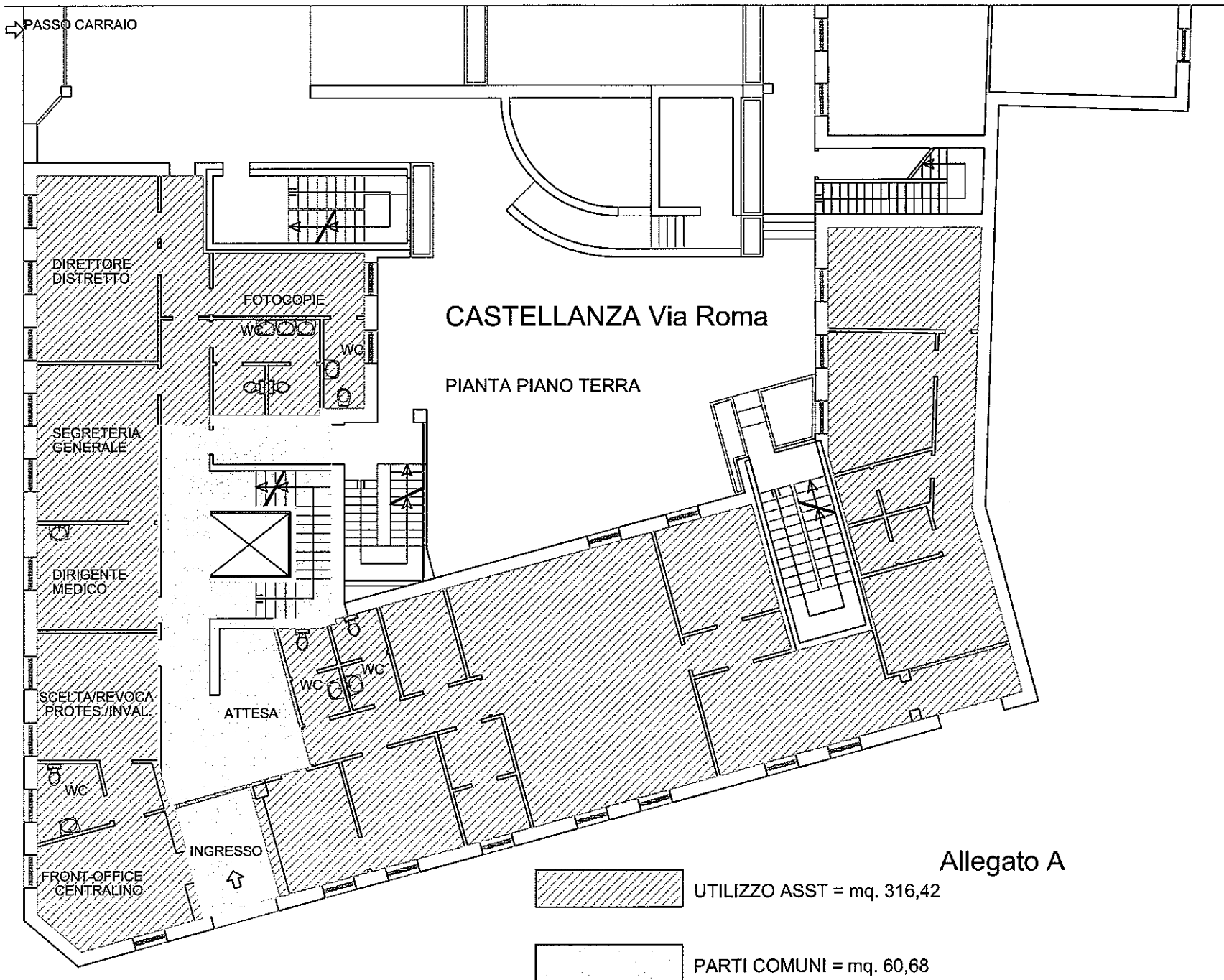


UTILIZZO ATS = mq. 173,10



CASTELLANZA Via Roma

PIANTA PIANO PRIMO



CASTELLANZA Via Roma

PIANTA PIANO TERRA

Allegato A

 UTILIZZO ASST = mq. 316,42

 PARTI COMUNI = mq. 60,68

Allegato A

 UTILIZZO ATS = mq. 96,84

 UTILIZZO ASST = mq. 34,45

 PARTI COMUNI = mq. 49,48

