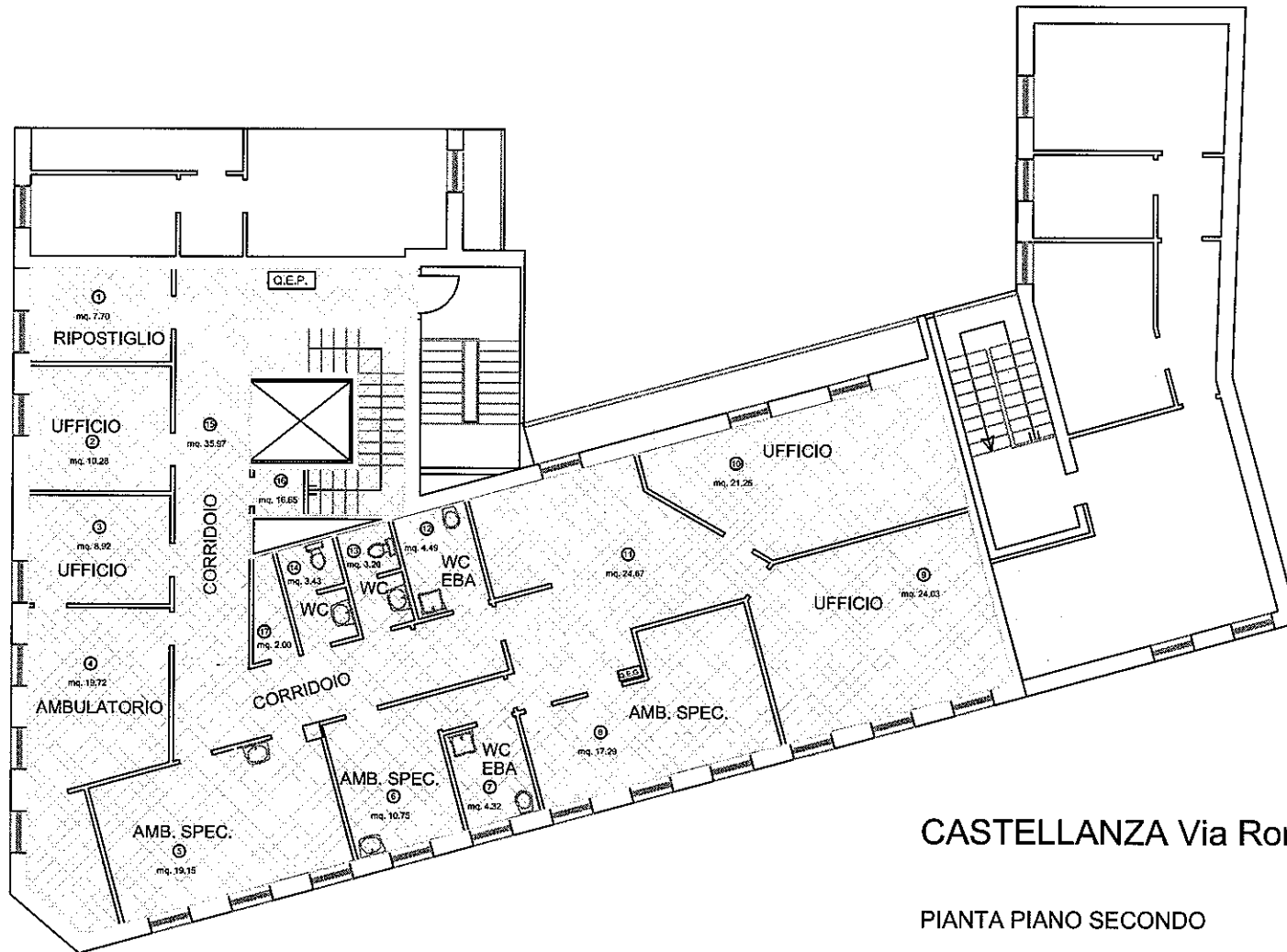


Allegato B *esploratio*

(delibera G.C. n. 295 del 29/12/2018)

UTILIZZO ATS = mq. 235,59



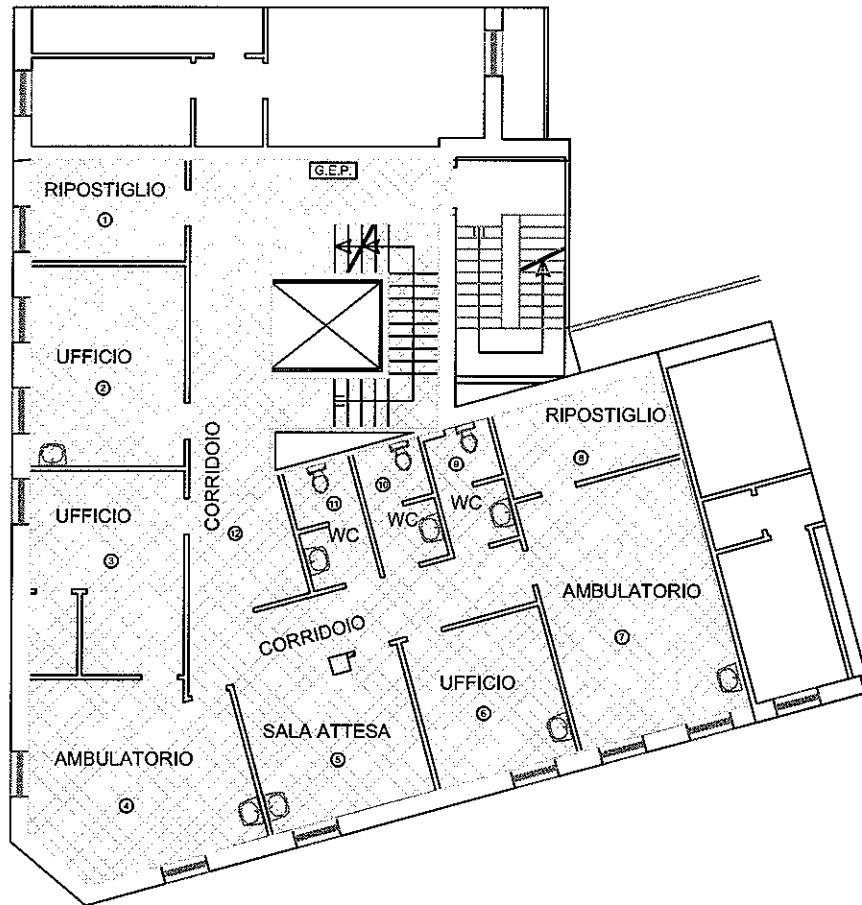
CASTELLANZA Via Roma

PIANTA PIANO SECONDO

# Allegato B

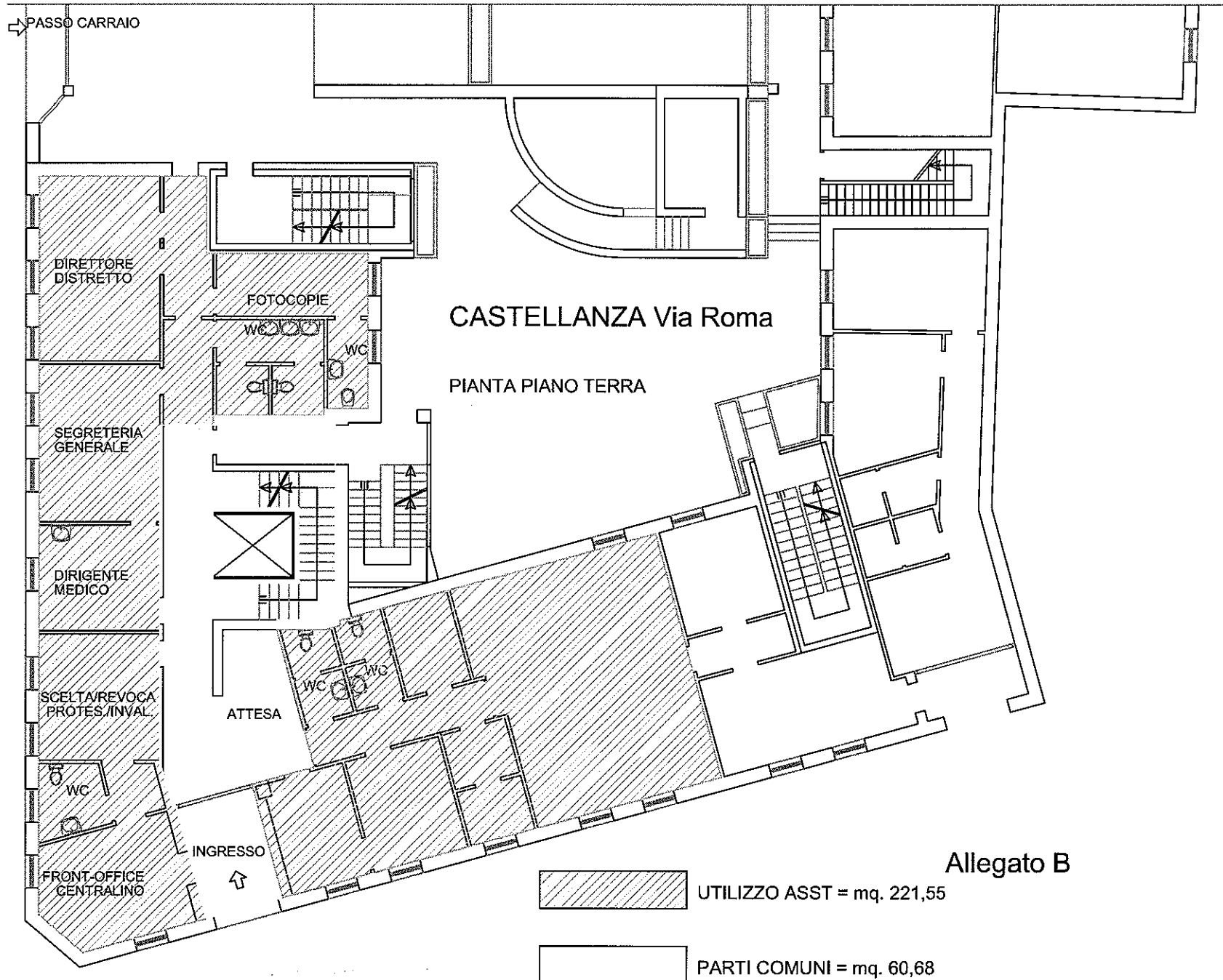


UTILIZZO ATS = mq. 173,10



CASTELLANZA Via Roma

PIANTA PIANO PRIMO



CASTELLANZA Via Roma

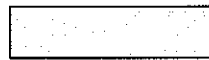
PIANTA PIANO TERRA

Allegato B

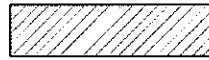
 UTILIZZO ASST = mq. 221,55

 PARTI COMUNI = mq. 60,68

# Allegato B



UTILIZZO ATS = mq. 96,84



UTILIZZO ASST = mq. 34,45



PARTI COMUNI = mq. 49,48

